

Diesel Engines Series 2000

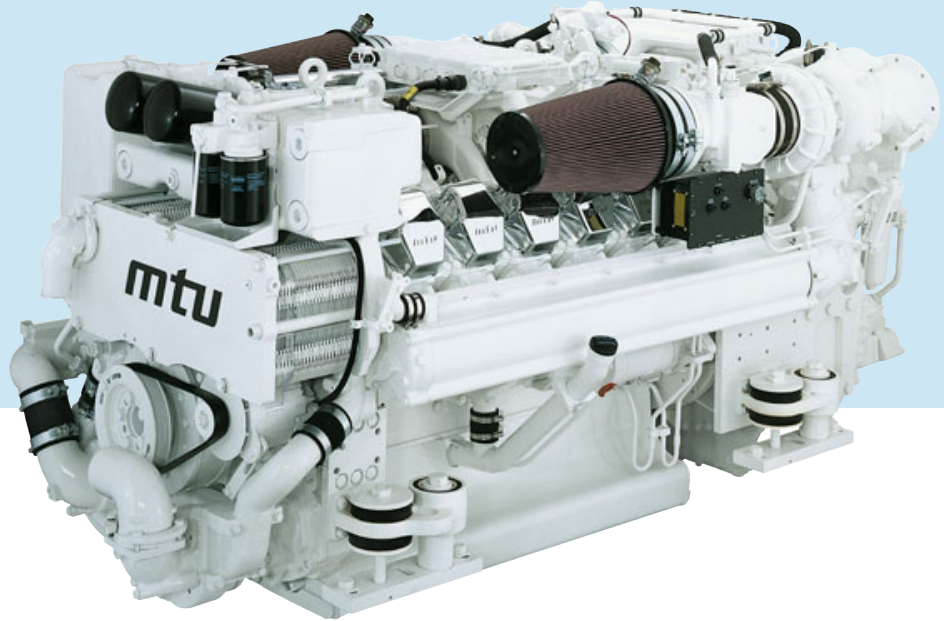
for Marine Applications

Maximum 1DS

1120 - kW

1521 - mhp

1500 - bhp



Compliant

with MARPOL 73/78 (IMO)
Annex VI NO_x Limits

Engine Specifications

Version	12v2000 M91
Displacement	24 liters (1458cu in)
Bore and Stroke	130 mm x 150 mm (5.12 in. x 5.91 in.)
Description	Sequential turbocharged and charge air cooled
Governor	MDEC
Port Model	R1227M01
Starboard Model	R1227M00

Standard Power Rating

Air Temp. 25 °C	kW	mhp	bhp	rpm
Sea Water Temp. 25 °C				
Rated Power	1120	1521	1500	2350
Rating Conditions			ISO 3046	

Standard Boat Profile

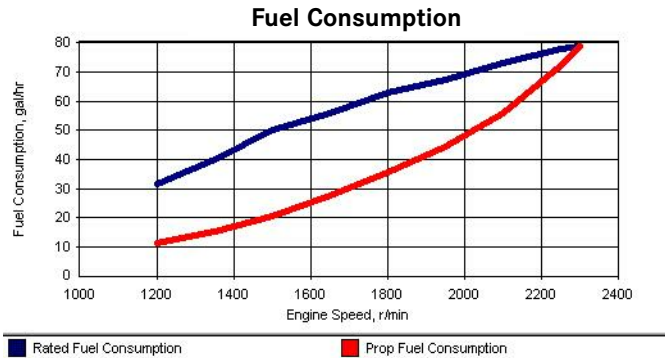
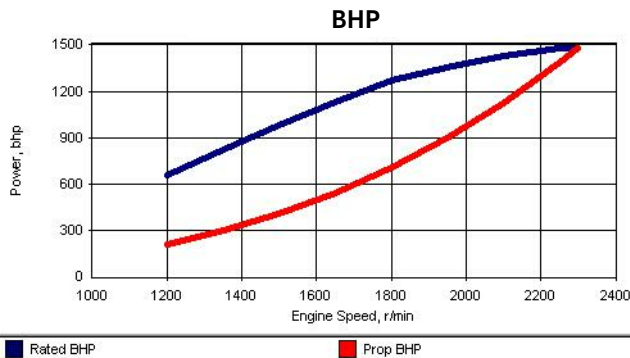
100% Power, 10% Time
70% Power, 70% Time
<10% Power, 20% Time

Typical applications

- Privately - owned yachts



DaimlerChrysler Off-Highway



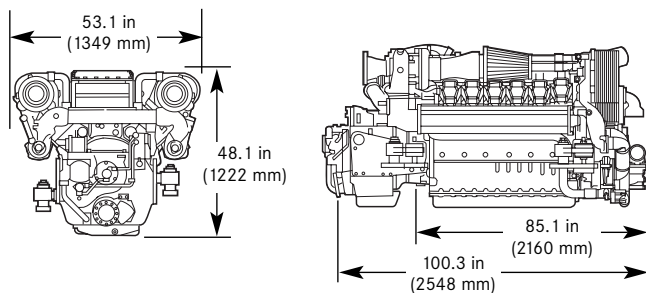
Power output guaranteed within +2/-0% at ISO 3046 conditions:
 77°F (25°C) air inlet temperature
 29.31 in. Hg (99 kPa) dry barometer
 77°F (25°C) fuel inlet temperature
 .847 specific gravity at 77°F (25°C)

Performance shown includes:
 Air intake restriction: 10 in. H₂O (2.5kPa)
 Exhaust back pressure: 15 in. H₂O (3.7kPa)
 Fuel Density: 7.07 lb/gal

Rating Definition - Maximum 1DS

The marine maximum rating applies to high performance application where speed is important and overall load factors are low. Maximum continuous cruising RPM is 2100 and full power is limited to 10% (average) of operating time. This rating is normally reserved for privately-owned yachts in non-revenue applications.

Dimensional Information



All dimensions are approximate. For complete dimensional information, refer to installation drawing provided by your authorized Detroit Diesel Corporation representative. Typical marine transmission shown.

Standard Equipment

Main Engines - Sequential and wastegate turbocharging; watercooled exhaust components; flywheel housing size SAE #1.

Fuel System - Electronic unit pump injection system; duplex secondary fuel filters mounted on front of engine. Double wall fuel lines.

Engine Oil System - Dual oil filters to be mounted on engine with diverter valve

Engine Cooling System - Titanium plate modular heat exchanger system with integral fuel cooler; gear-driven self-priming raw water pump with 4" hose inlet; coolant recovery bottle

Air Inlet System - Direct mounted turbocharger; 24V air shutdown valve

Electrical - Starter: 24V, 2-pole isolated ground; Alternator: 24V/100 amp, 2-pole isolated ground, belt driven

Engine Mounting - Factory installed resilient mounts

Exhaust Connection System - (2) Horizontal dry outlet flanges with bellows

Optional Equipment

Air Inlet System - Electronically actuated air flap

Exhaust Connection System - (2) Vertical dry flange elbows

Marine Gear Transmissions - Available in numerous ratio's & configurations

Electronic Engine Monitoring & Controls - Available

Accessory Drives

SAE A rear of front gear train
 SAE A rear of flywheel housing

Type PTO Options - Axial drive off front crank pulley

Transmission Accessory Options -

Electric Trolling Valve, trailing pump
 Trailing Pump
 Live or clutchable C pad PTO

Appearance Package - Two part polyurethane paint and chrom valve covers.

For a complete listing of standard and optional equipment, consult your authorized representative.



For more information contact your MTU or DDC distributor. All Detroit Diesel distributors in NAFTA are authorized MTU distributors.
www.mtu-online.com / www.detroitdiesel.com / marine@detroitdiesel.com